



OS

sistemas minimalistas
systèmes minimalistes
minimal systems

Grupo Sosoares



O Grupo Sosoares tem origem na criação da sociedade “Sosoares - Máquinas e Ferragens, Lda.”, em 1979. Desde então foi ganhando dimensão, sendo actualmente constituída por quatro empresas que se complementam entre si no projeto, desenvolvimento, produção e comercialização de sistemas de caixilharia de alumínio e vidro para a arquitetura cuja marca própria é Sistemas Euro 2000®. Procura desta forma, solucionar todas as imposições técnicas e estéticas exigidas pelos atuais empreendimentos modernos, de forma a dar resposta às solicitações dos projetistas nas novas tendências arquitetónicas fortemente viradas para a transparência. É o primeiro Grupo nacional a integrar, na transformação e na distribuição, os dois materiais fortemente interligados nas caixilharias - o alumínio e o vidro.

Le Groupe Sosoares surgit de la création de la société “Sosoares – Máquinas e Ferragens, Lda.” en 1979. Il s’est depuis agrandi et est composé actuellement de quatre sociétés qui se complètent dans la conception, le développement, la production et la commercialisation de châssis en aluminium et en verre pour l’architecture dont la marque est Sistemas Euro 2000®. Il recherche ainsi, la meilleure solution aux normes techniques et esthétiques requises par les entreprises modernes, afin de répondre aux exigences des concepteurs de nouvelles tendances architecturales fortement tournées vers la transparence. Il est le premier groupe national à intégrer, dans la transformation et la distribution, les deux matériaux fortement liés dans les châssis - l’aluminium et le verre.

Group Sosoares has its origins in the creation of the society «Sosoares - Máquinas e Ferragens, Lda.» in 1979. Since then, it has been growing, currently consisting of four companies that complement each other in design, development, production and trading of aluminum frames and glass for architecture whose own brand is Sistemas Euro 2000®. We therefore seek to solve all technical and aesthetic constraints required by the current modern enterprises in order to answer to the requests of the designers in new architectural trends strongly oriented towards transparency. It is the first national Group to join, in the processing and distribution, the two strongly correlated materials in frames - aluminum and glass.

OS

sistemas minimalistas com rutura térmica
systèmes minimalistes avec rupture de pont thermique
minimal systems with thermal break

2

OS-D+ (32mm)

sistema minimalista de correr com corte térmico
système minimaliste coulissant à rupture de pont thermique
minimal sliding system with thermal break

4

OS-T (56mm)

sistema minimalista de correr com corte térmico
système minimaliste coulissant à rupture de pont thermique
minimal sliding systems with thermal break

20

OS-Pivot

sistema minimalista pivotante com corte térmico
système minimaliste pivotante à rupture de pont thermique
minimal pivoting system with thermal break

38

OS-Guilhotina

sistema minimalista de guilhotina com corte térmico
système minimaliste de guillotine à rupture de pont thermique
minimal sash system with thermal break

48

Presença Sosoares
Présence Sosoares
Sosoares presence

54

Agradecimentos
Acknowledgments
Remerciements

72

OS sistemas minimalistas com ruptura térmica
systèmes minimalistes avec rupture de pont thermique
minimal systems with thermal break

Concebido especialmente para vãos de grandes dimensões, o sistema minimalista de correr OS, surge como resposta às novas tendências arquitetónicas que procuram conjugar o máximo de transparência com o mínimo de vista estrutural, em todas as suas versões de soleira: Tradicional, Oculta ou Oculta com pavimento. Quer seja com a vista da soleira em alumínio ou a mesma totalmente embebida no piso, este sistema dota a passagem entre interior e exterior de uma forma contínua, facilitando a circulação das pessoas, mesmo com mobilidade reduzida. Conjugando com o sistema de abertura motorizada, o Sistema OS possibilita a conceção de vãos de dimensões consideráveis, permitindo assim uma área extra de envidraçado. Às três vertentes do sistema minimalista de correr OS Simple, Double e Triple, juntam-se as vertentes OS-Pivot e OS-Guilhotina.

Spécialement conçu pour les châssis de grandes dimensions, le système minimaliste coulissant OS apporte une solution aux tendances architecturales contemporaines qui cherchent à conjuguer le maximum de transparence avec le minimum de vue structurelle, dans toutes ses versions de seuil: Traditionnel, Caché avec capot aluminium ou Caché avec revêtement sol continu. Que ce soit avec la vue seuil en aluminium ou même totalement intégrée dans le sol, ce système dote la transition entre l'intérieur et l'extérieur de la pièce d'une manière continue, ce qui facilite le passage, même pour les personnes à mobilité réduite. La combinaison avec le système d'ouverture motorisé permet au système de concevoir des ouvertures de dimensions considérables, ce qui permet un espace supplémentaire de vitrage. Aux trois versions de notre système minimaliste coulissant OS Simple, Double et Triple, sont ajoutés les versions OS-Pivot et OS-Guillotine.

Specially conceived for larger frames, the OS minimalist sliding system rose as an answer to the most contemporary architectural trends, aiming to combine the maximum transparency with the minimum structural view, in all its sill versions: Traditional, Concealed with aluminium cover and Concealed with continuous flooring. Whether it is with the view of the sill in aluminium or with the same fully embedded floor, this system endows the transition between inner and outer spaces in a continuous way, enabling as such an easier passage, even for people with reduced mobility. Combined with the motorized opening system, the OS System allows the design of frames of large dimensions, allowing as such an extra area of glazing. To the three strands of our minimalist sliding system OS Simple, Double and Triple, we now add the OS-Pivot and OS-Guillotine versions.



OS-Simple | OS-Double+

PORTET HOUSE | ALICANTE | DALIA ALBA ARCHITECT | JAVIER BRIONES PHOTOGRAPHY

Área máxima/folha*: 8,00m²
Surface maximale/vantail | Maximum area/sash
Peso máximo/folha*: 500Kg
Poids maximal/vantail | Maximum weight/sash
Altura máxima/folha*: 4000mm
Hauteur maximale/vantail | Maximum height/sash
Enchimento OS-S: 10mm | 12mm | 16mm
Remplissage | Filling
Enchimento OS-D+: 32mm | 35mm
Remplissage | Filling
Abertura manual ou motorizada
Ouverture manuelle ou motorisée | Manual or motorised opening

*Para outras dimensões consultar Departamento Técnico
Pour d'autres dimensions, veuillez consulter notre Département Technique
For other dimensions, contact our Technical Department

Ensaio | Essais | Test CXL 123/19 - 17-12-2019

Permeabilidade ao AR: **4**
Perméabilité à l'AIR | AIR Permeability

Estanquidade à ÁGUA: **7A**
Étanchéité à l'EAU | WATER Tightness

Resistência ao VENTO: **B3**
Résistance au VENT | WIND Resistance

Coefficiente Transmissão TÉRMICA:
Coefficient de transmission THERMIQUE | THERMAL Transmittance

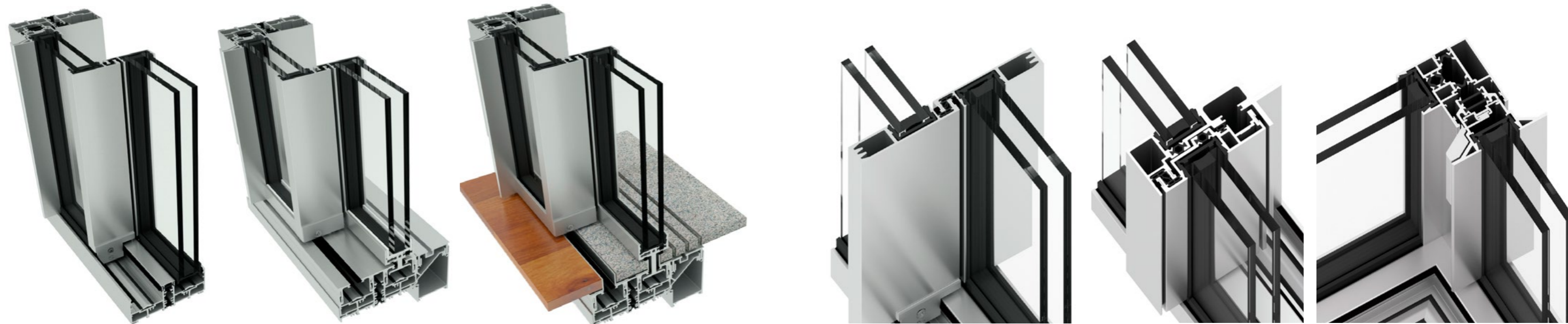
Uw = 1,48 W/m²K*
Ug = 1,0 W/m²K

* Cálculo realizado considerando uma tipologia com soleira tradicional
Calcul effectué considérant une typologie de seuil traditionnel
Calculation performed considering a typology with traditional sill

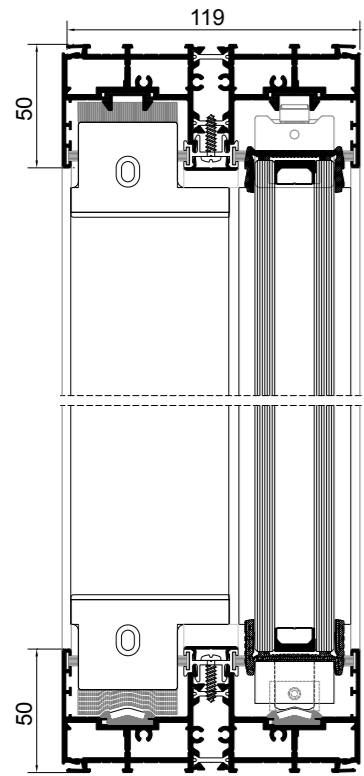
Isolamento ACÚSTICO:
Isolation ACOUSTIQUE | ACOUSTIC Insulation

Ensaio | Essais | Test ACL 193-19 - ITeCons

Rw = 38dB (-1; -4)
Rw (IGU) = 42dB



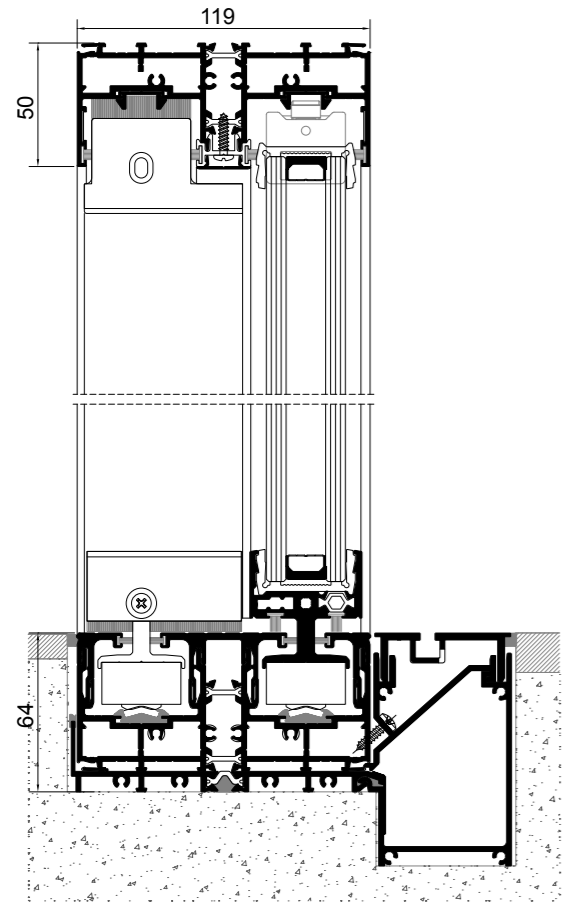
OS-D+ soleira tradicional
seuil classic
classic sill



COSTA NOVA SAILING CLUB | PORTUGAL | FERREIRA ARCHITECTS | PHOTOGRAPHY BY IVO TAVARES STUDIO



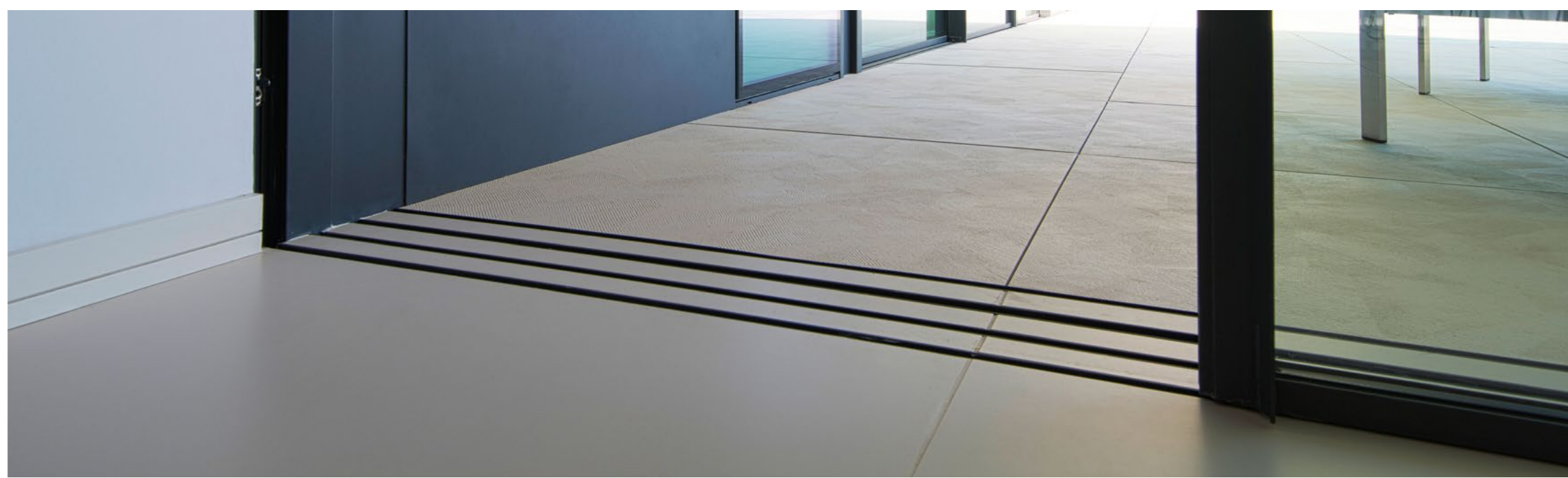
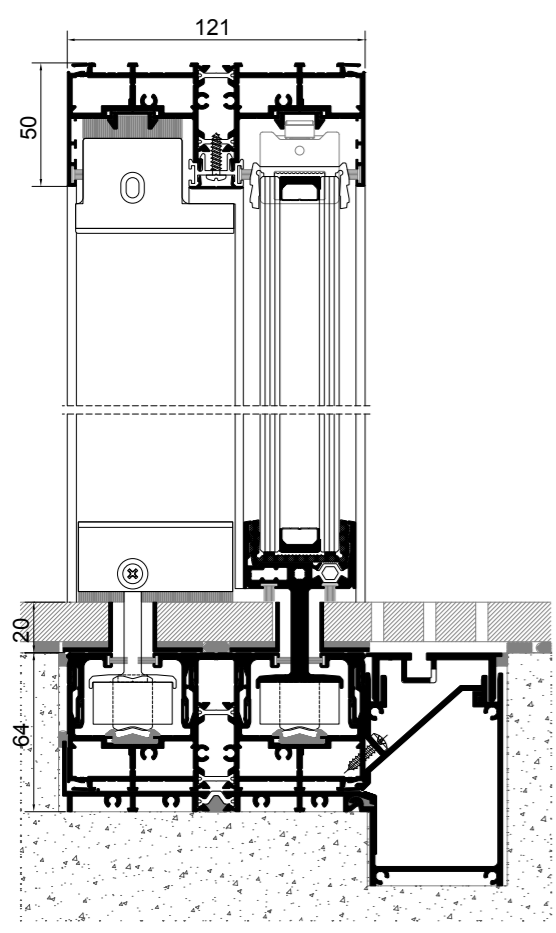
OS-D+ soleira oculta
seuil cachée
concealed sill



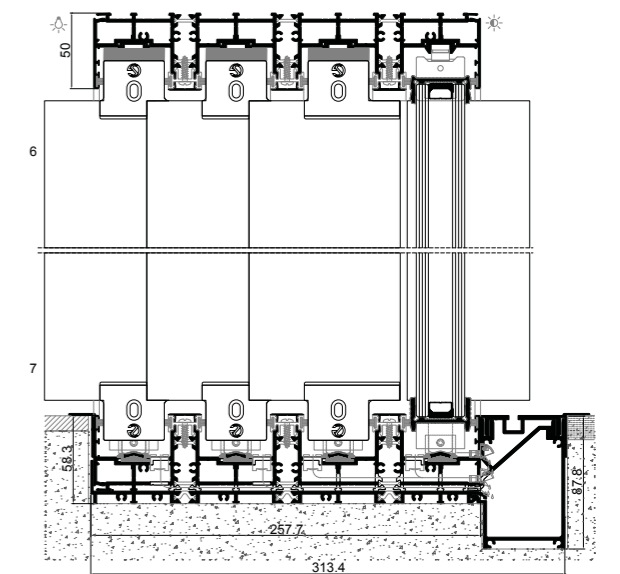
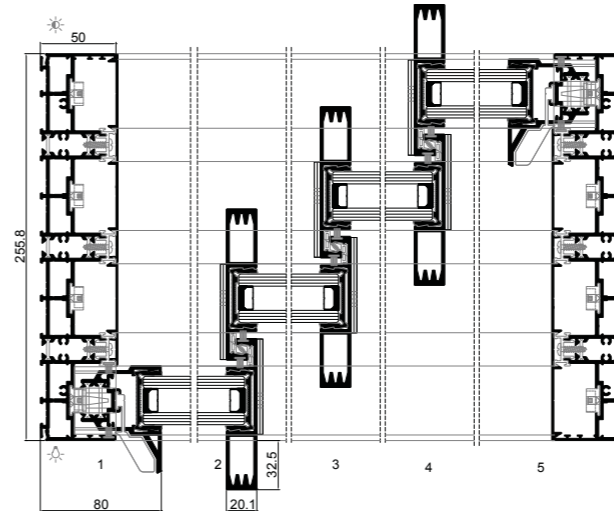
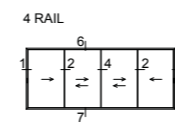
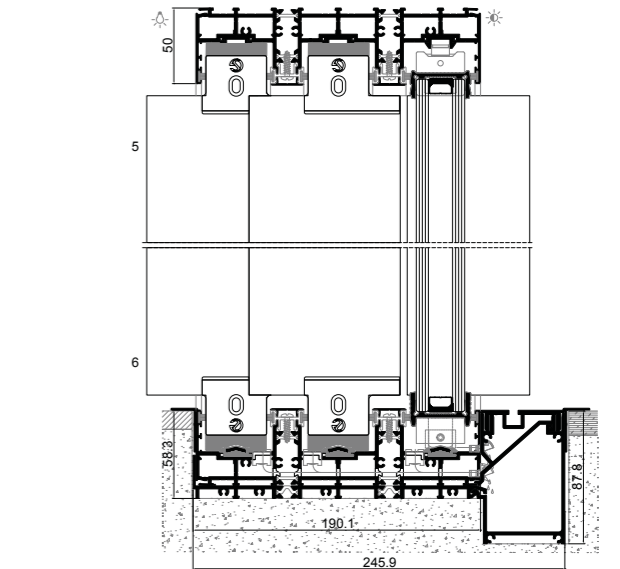
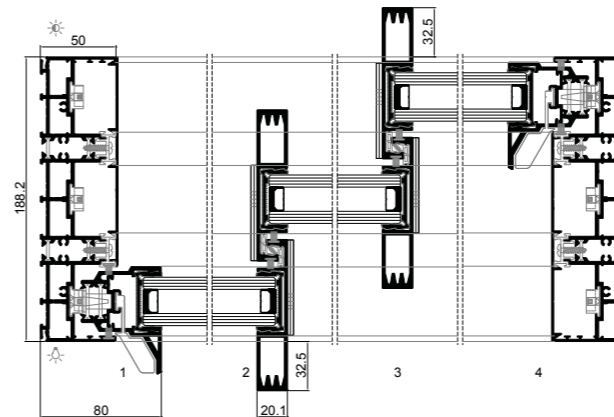
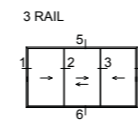
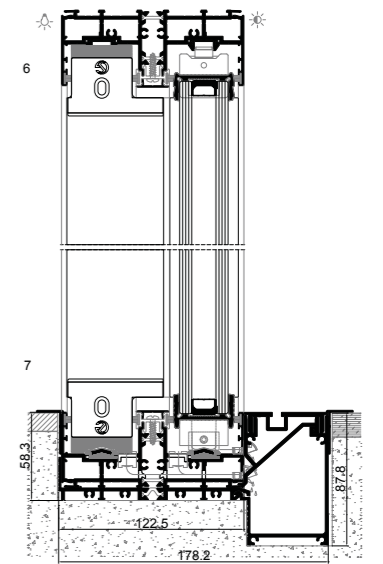
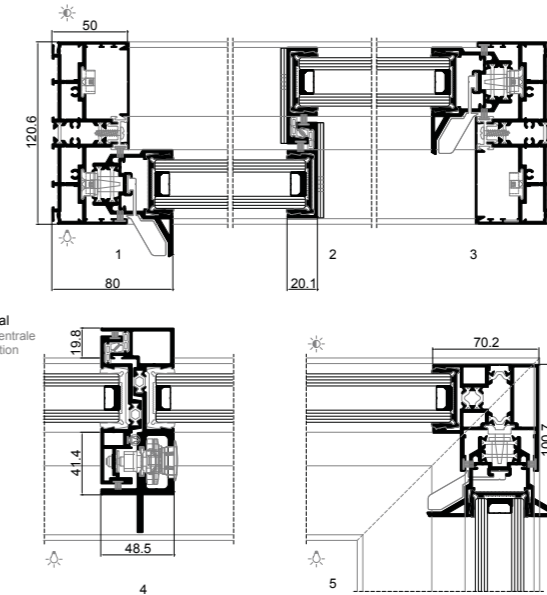
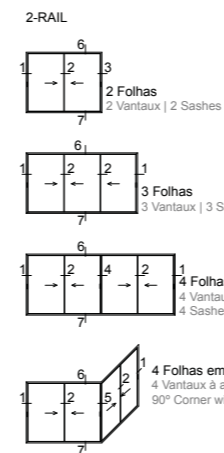
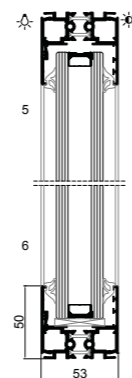
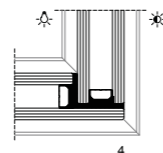
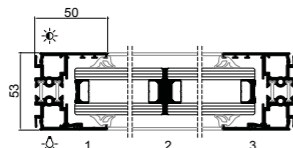
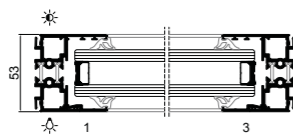
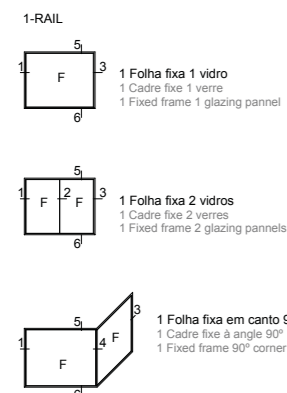
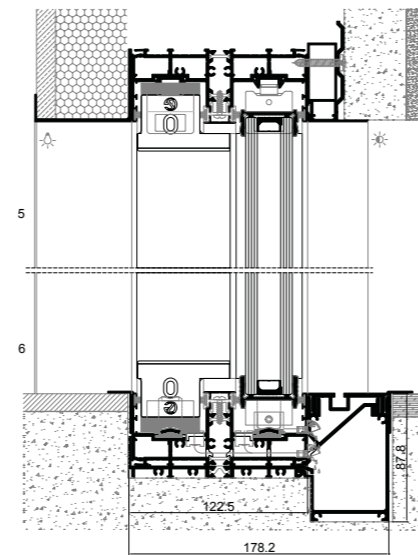
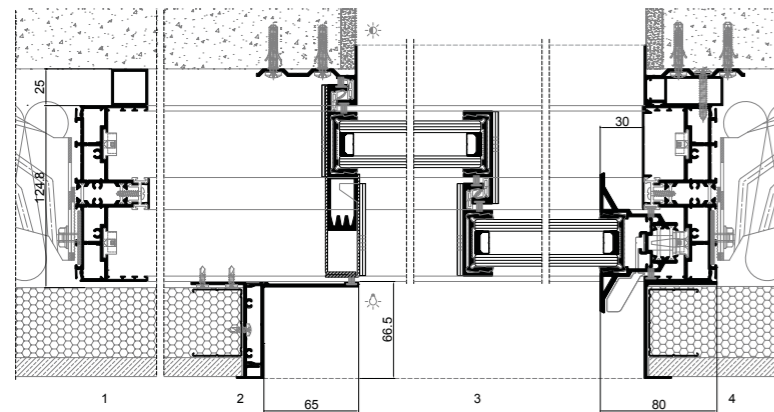
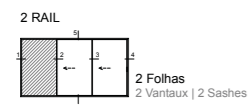
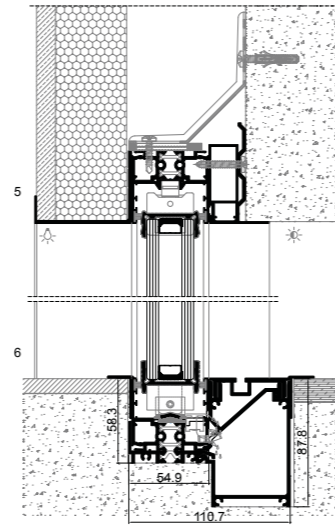
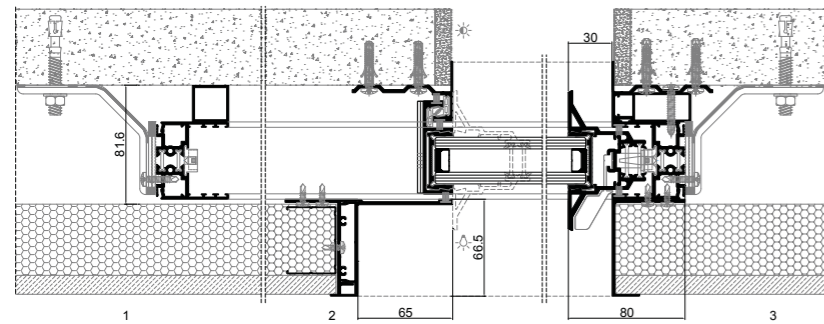
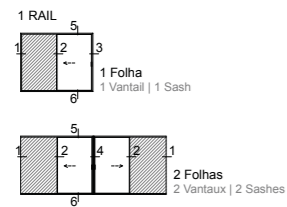




OS-D+ soleira oculta com pavimento contínuo
seuil cachée avec revêtement sol continu
concealed sill with continuous floor



OS-D+ tipologias typologies typologies



Todas as tipologias apresentadas são possíveis de executar em soleira oculta e soleira oculta com pavimento | Toutes les typologies présentées peuvent être réalisées

avec seuil caché et seuil caché avec revêtement sol continu | All typologies presented can be executed with a concealed sill and concealed sill with continuous flooring

OS-Triple

SILENCE HOUSE | SPAIN | FRAN SILVESTRE ARCHITECTS | FG+SG ARCHITECTURAL PHOTOGRAPHY

Área máxima/folha*: 14,00m²

Surface maximale/vantail | Maximum area/sash

Peso máximo/folha*: 1000Kg (com motorização)

Poids maximal/vantail (avec motorisation)

Maximum weight/sash (with motorization)

Altura máxima/folha*: 6000mm

Hauteur maximale/vantail | Maximum height/sash

Enchimento (vidros temperados): 56mm

Remplissage | Filling

Abertura manual ou motorizada

Ouverture manuelle ou motorisée | Manual or motorised opening

*Para outras dimensões consultar Departamento Técnico

Pour d'autres dimensions, veuillez consulter notre Département Technique

For other dimensions, contact our Technical Department

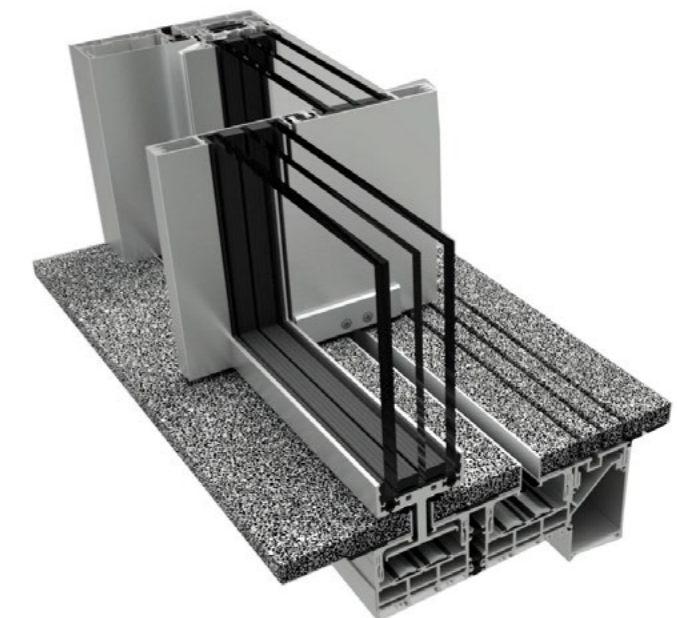
Coefficiente Transmissão TÉRMICA:

Coefficient de transmission THERMIQUE | THERMAL Transmittance

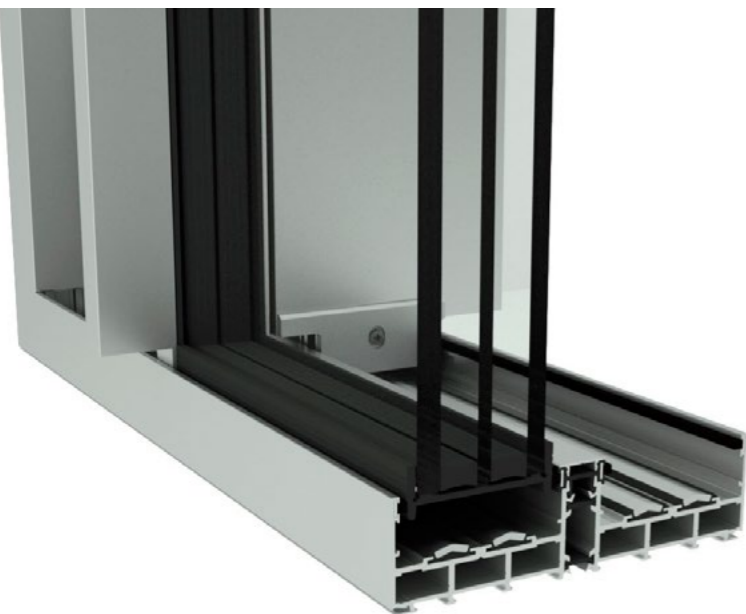
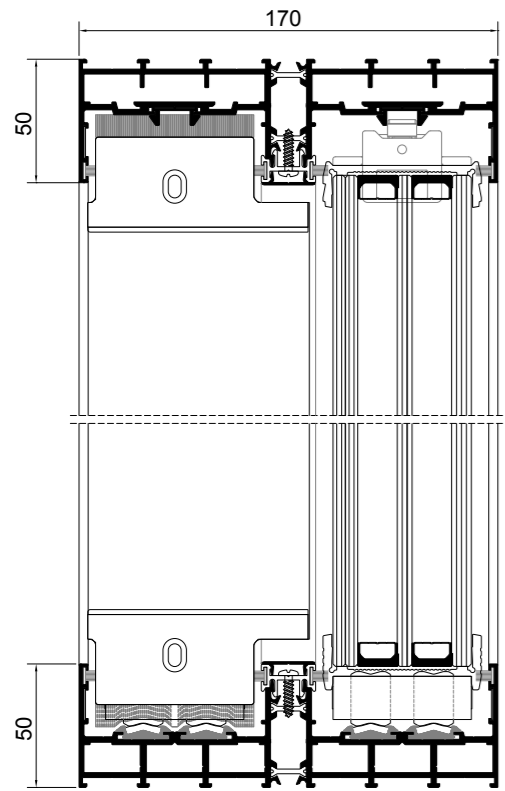
UNE-ISO 13947:2005

Uw = 1,10 W/m²K

Ug = 0,6 W/m²K - Vidro triplo | Triple vitrage | Triple glazing

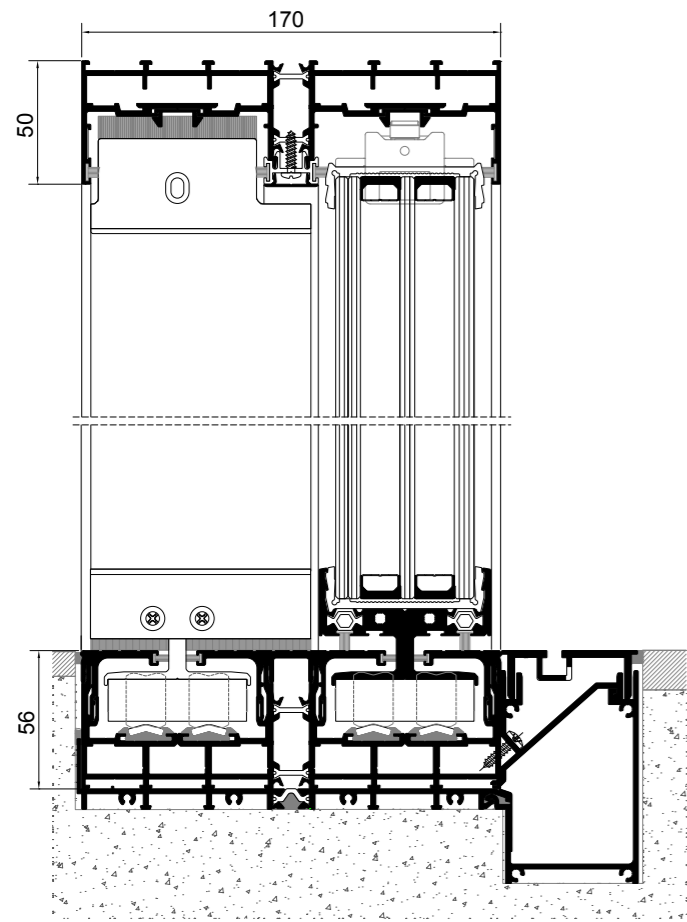


OS-T soleira tradicional
seuil classic
classic sill



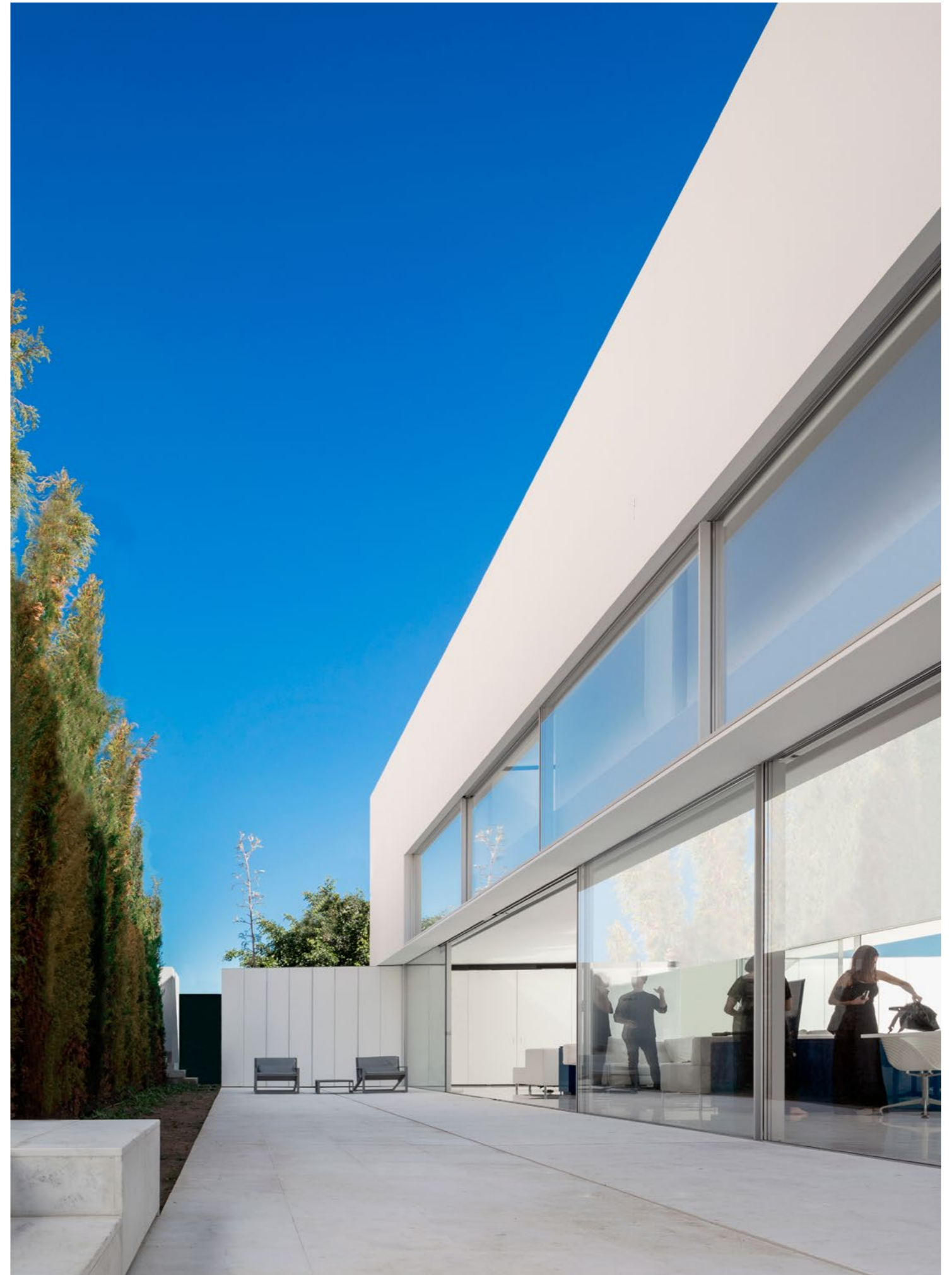
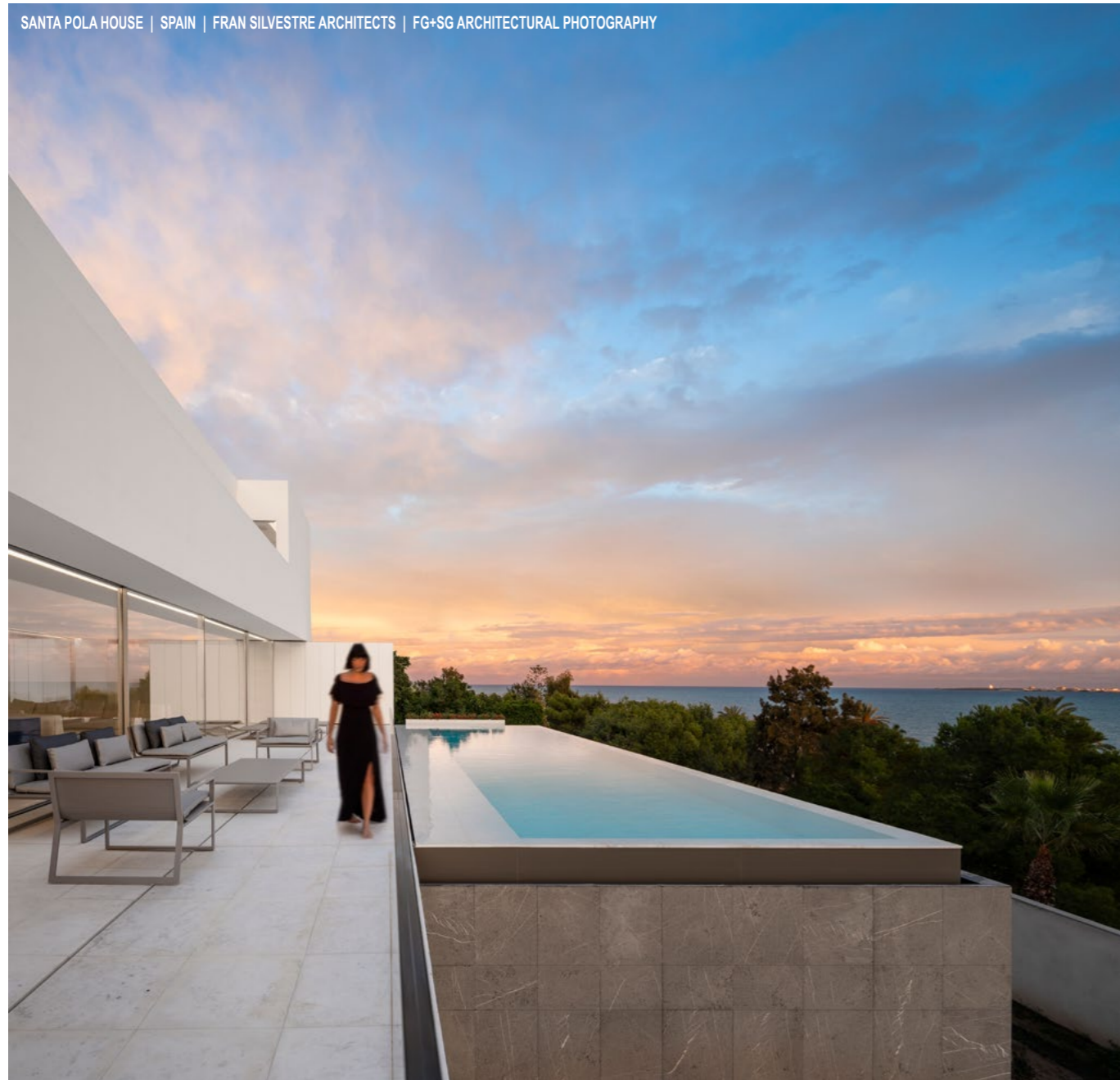


OS-T soleira oculta
seuil cachée
concealed sill

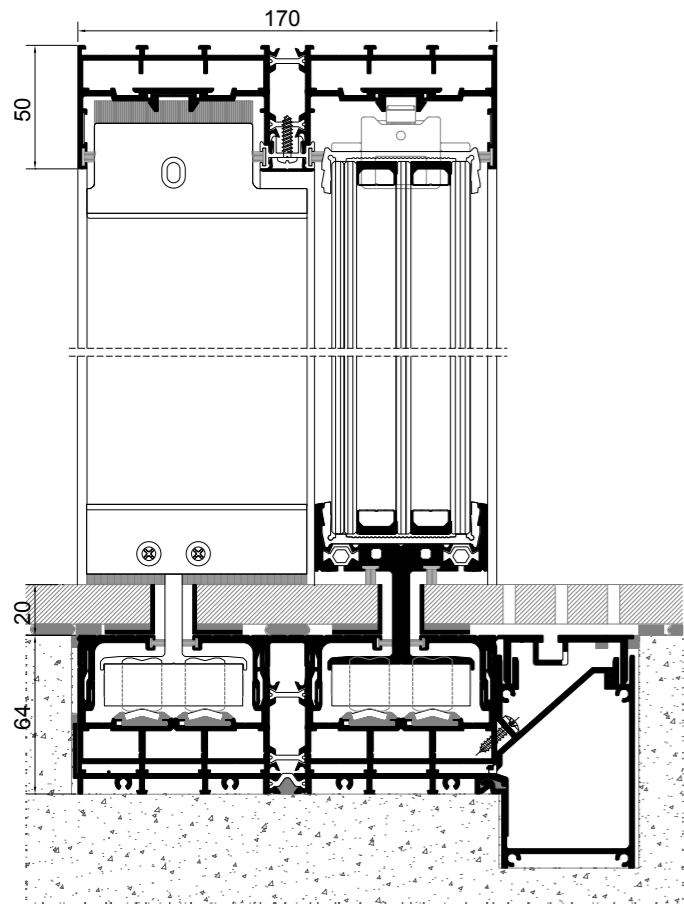






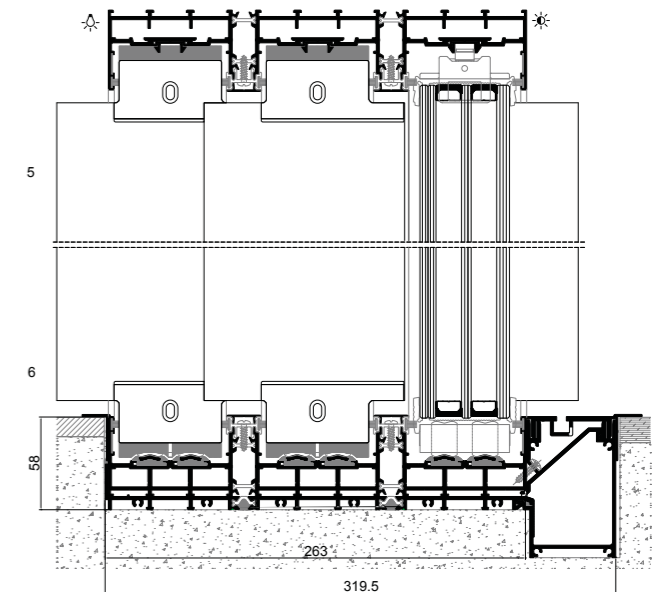
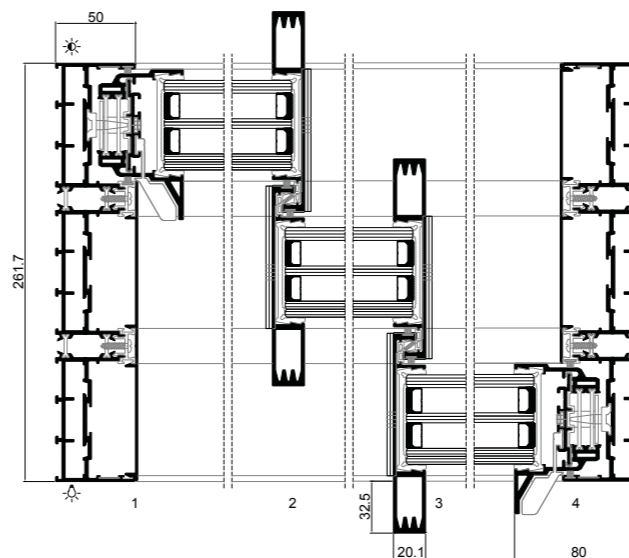
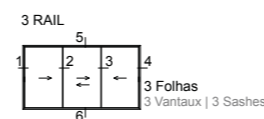
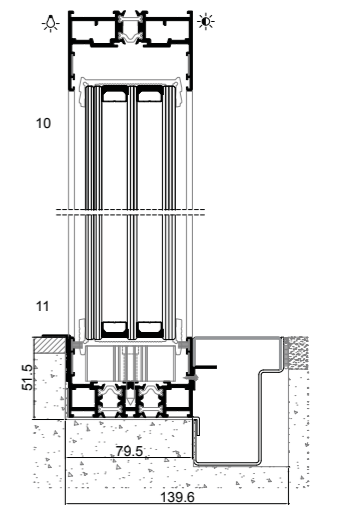
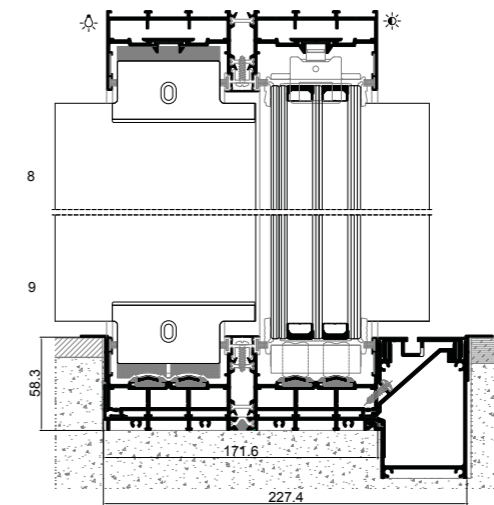
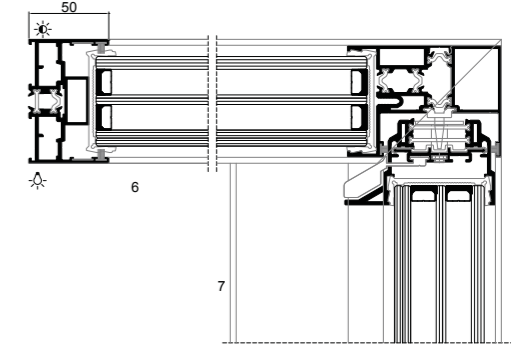
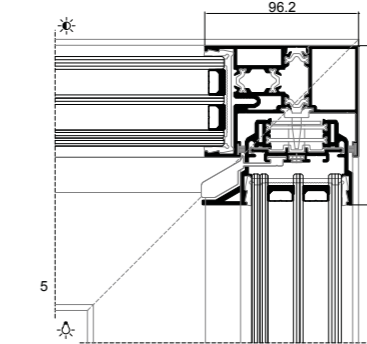
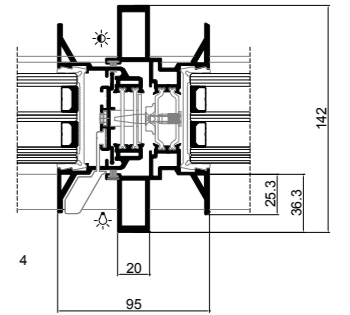
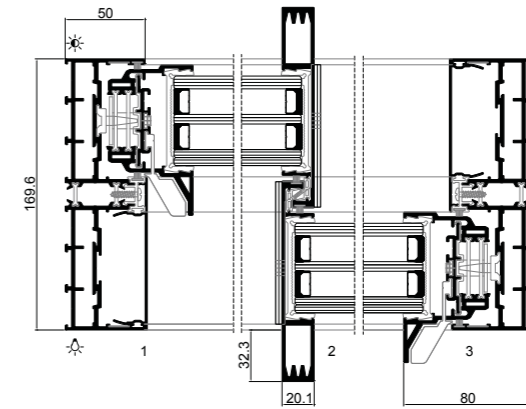
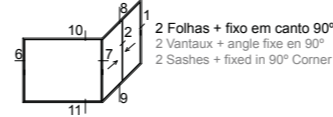
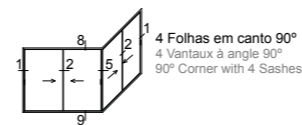
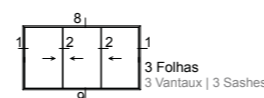
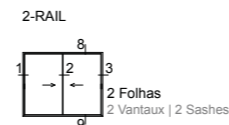
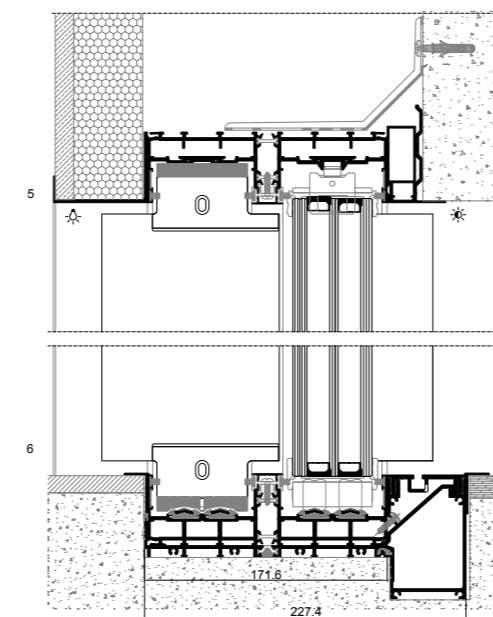
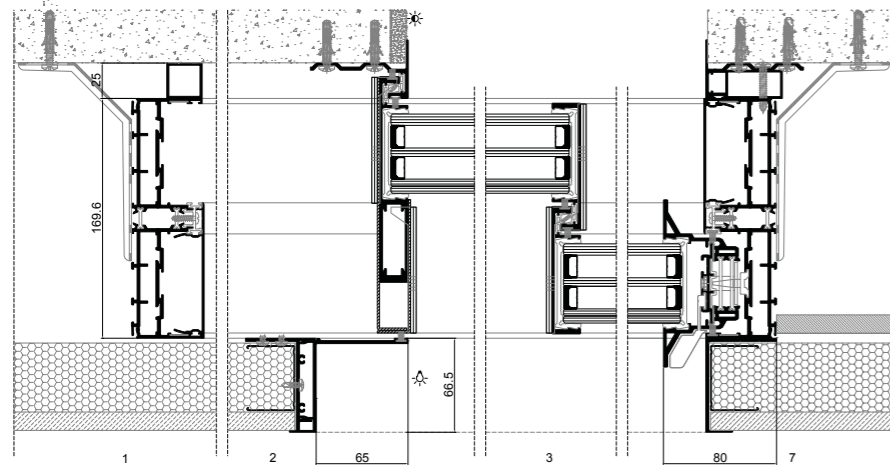
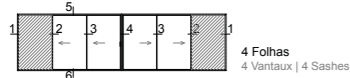
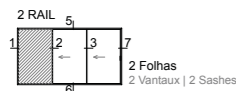
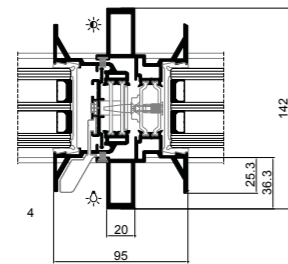
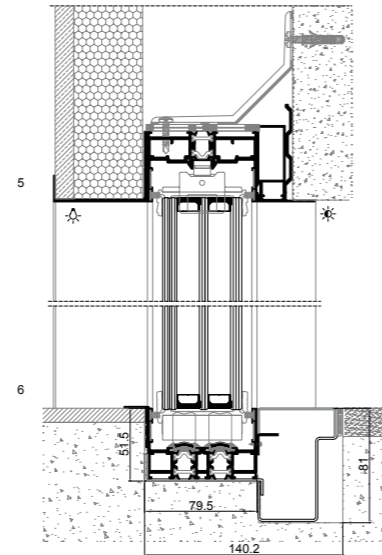
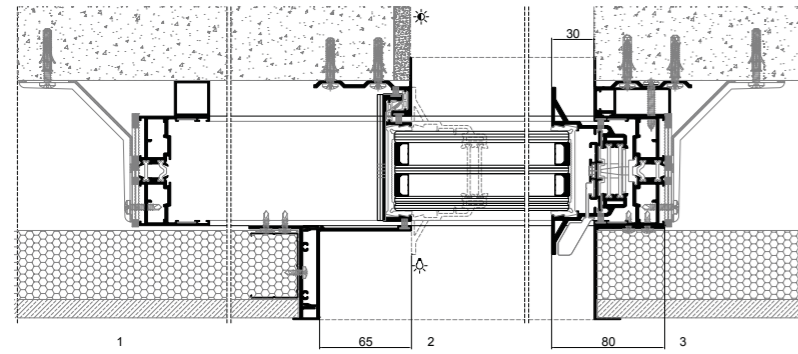
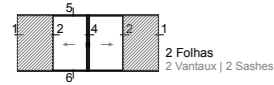
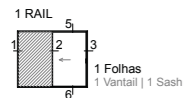


OS-T soleira oculta com pavimento
seuil cachée avec revêtement sol continu
concealed sill with continuous flooring



HOUSE in SWEDEN | REALESTELLIGENCE PART OF INVESTELLIGENCE GROUP





Todas as tipologias apresentadas são possíveis de executar em soleira oculta e soleira oculta com pavimento | Toutes les typologies présentées peuvent être réalisées

avec seuil caché et seuil caché avec revêtement sol continu | All typologies presented can be executed with a concealed sill and concealed sill with continuous flooring

OS-Pivot

sistema minimalista pivotante com corte térmico
système minimaliste pivotante à rupture de pont thermique
minimal pivoting system with thermal break

No seguimento do conceito de vãos minimalistas para arquitetura e com o intuito de ir ao encontro das necessidades dos seus clientes mais exigentes, a Sosoares desenvolveu o sistema minimalista Pivotante de modo a complementar a vertente de correr OS. Deste modo é possível dotar a edificação de uma linguagem coerente no que concerne à caixilharia. Especialmente concebida para vãos de grandes dimensões, este novo sistema permite atingir o peso de 500Kg por folha.

Suivant le concept de fenêtres minimalistes pour l'architecture et afin de répondre aux besoins de ses clients les plus exigeants, Sosoares a développé le système de porte pivotante minimaliste pour compléter la composante des coulissants du système OS. Ainsi, il est possible d'équiper le bâtiment d'un langage cohérent par rapport aux autres châssis. Spécialement conçu pour les grandes dimensions, ce nouveau système permet d'atteindre le poids de 500kg par vantail.

Following the concept of minimalist windows for architecture and in order to meet the needs of its most demanding customers, Sosoares developed the minimalist Pivot system to complement the sliding component of OS. Thus it is possible to equip the building of a coherent language in terms of frames. Specially designed for large dimensions, this new system allows to achieve the weight of 500Kg per panel.



HOUSE in SWEDEN | REALESTELLIGENCE PART OF INVESTELLIGENCE GROUP

OS-Pivot

Peso máximo/folha: 500Kg

Poids maximal/vantail | Maximum weight/sash

Largura máxima/folha: 1500mm*

Hauteur maximale/vantail | Maximum height/sash

Enchimento: 56mm - vidro duplo / vidro triplo

Remplissage | Filling: 56mm - double glazing / triple glazing | double vitrage / triple vitrage

Aberturas: manual ou motorizada

Ouverture manuelle ou motorisée | Manual or motorised opening

*Para outras dimensões consultar Departamento Técnico

Pour d'autres dimensions, veuillez consulter notre Département Technique

For other dimensions, contact our Technical Department

Coeficiente Transmissão TÉRMICA:

Coefficient de transmission THERMIQUE | THERMAL Transmittance

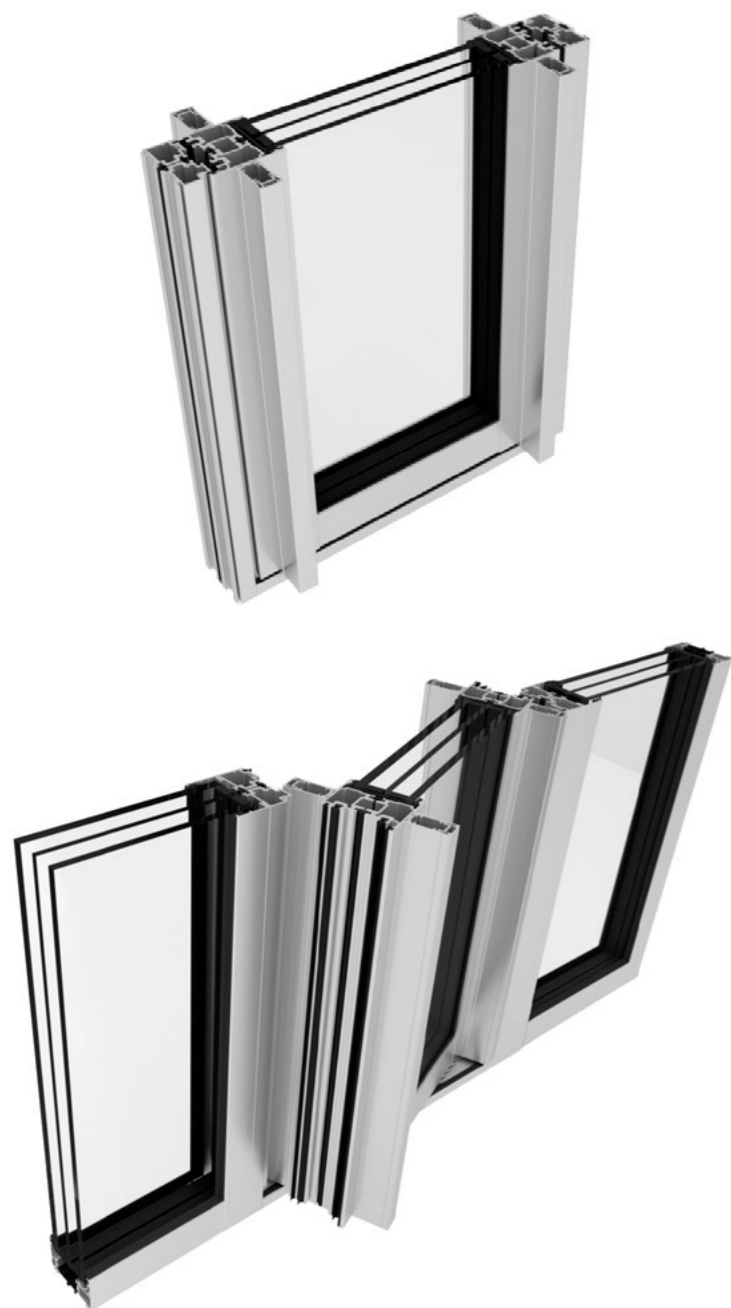
UNE-ISO 13947:2005

Uw = 1,24 W/m²K

Ug = 0,5 W/m²K - Vidro triplo | Triple vitrage | Triple glazing

Uw = 1,75 W/m²K

Ug = 1,10 W/m²K - Vidro duplo | Double vitrage | Double glazing





PALACE | DUBAI

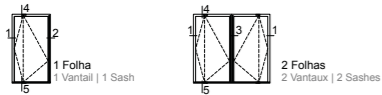


HOUSE | PORTUGAL

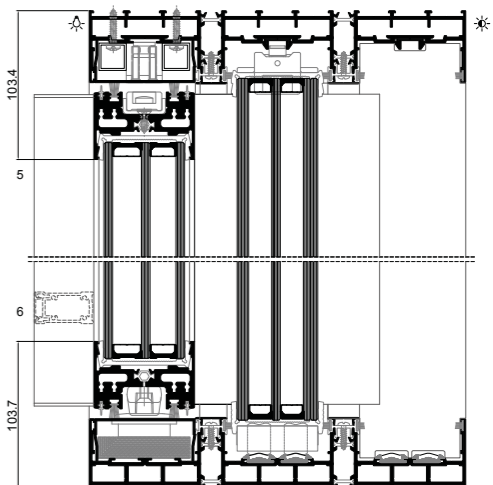
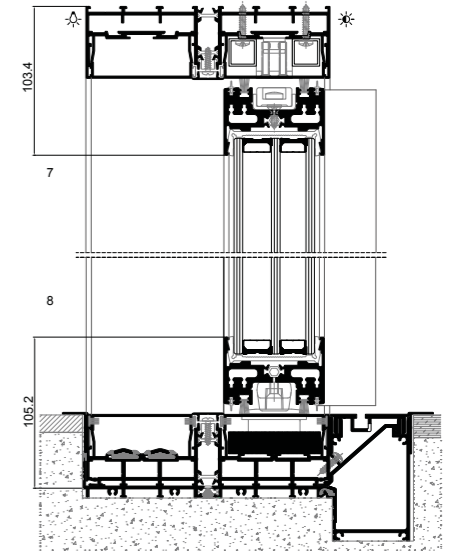
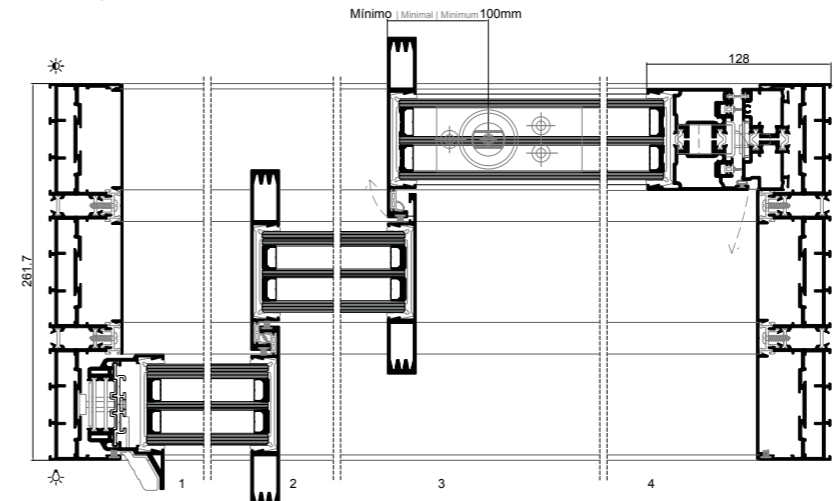
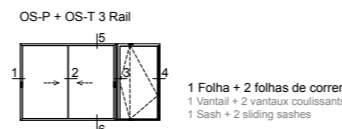
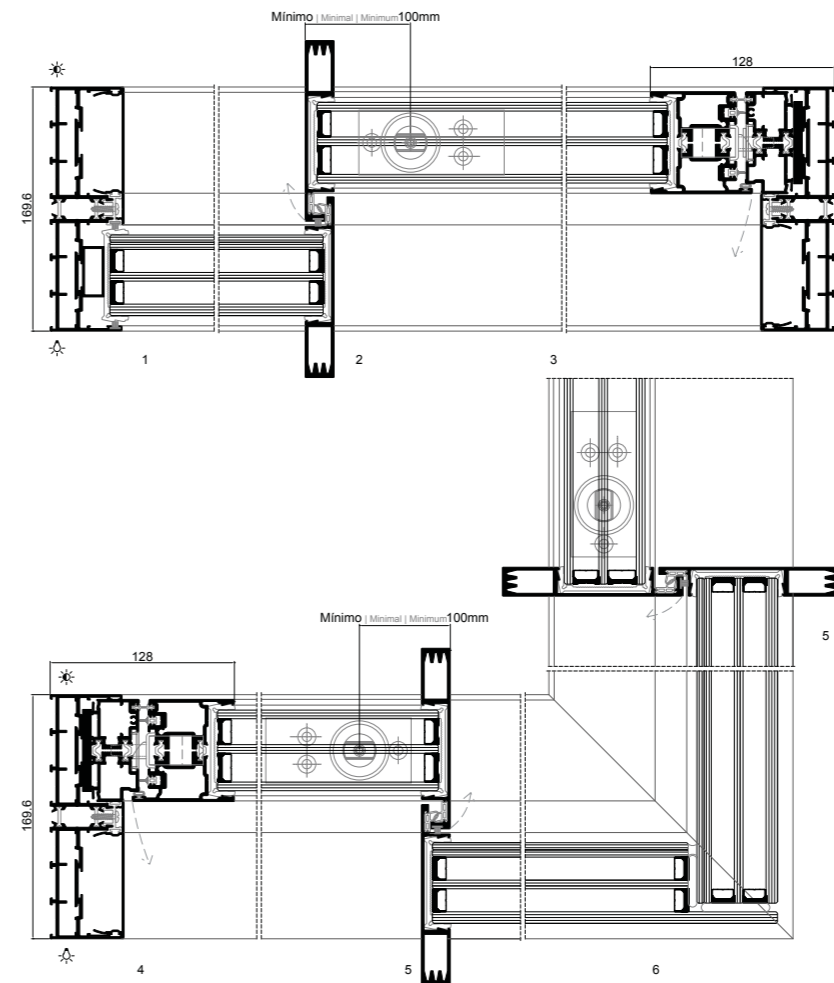
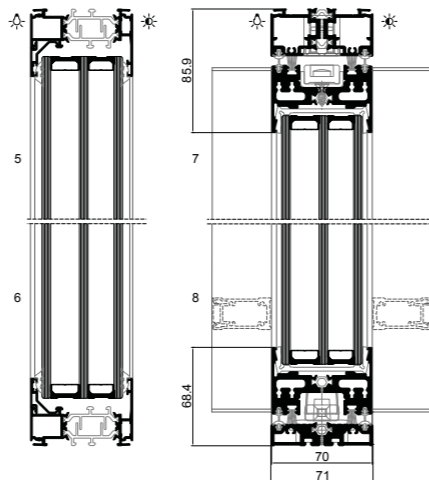
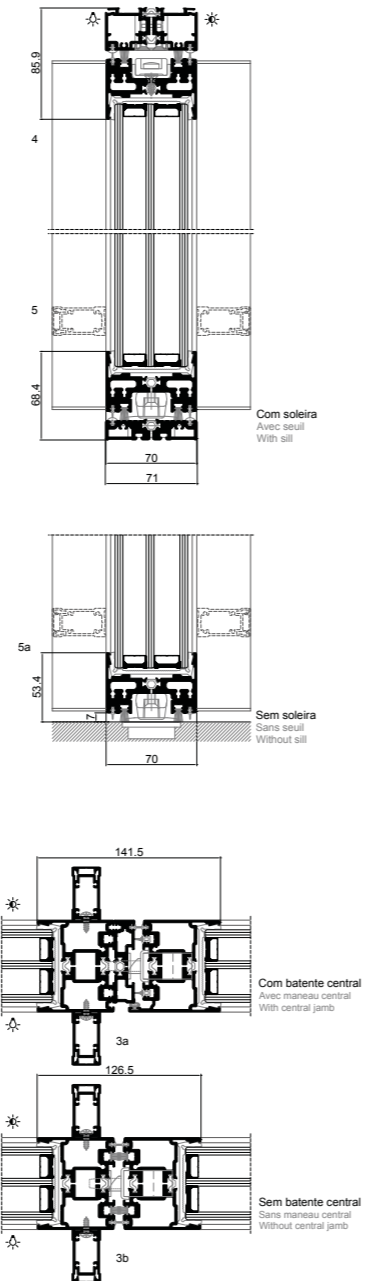
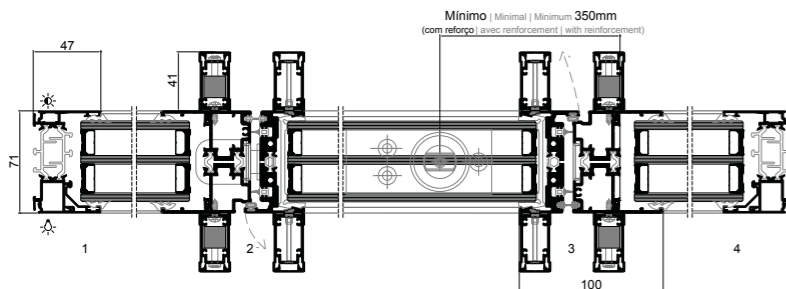
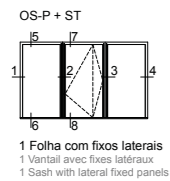
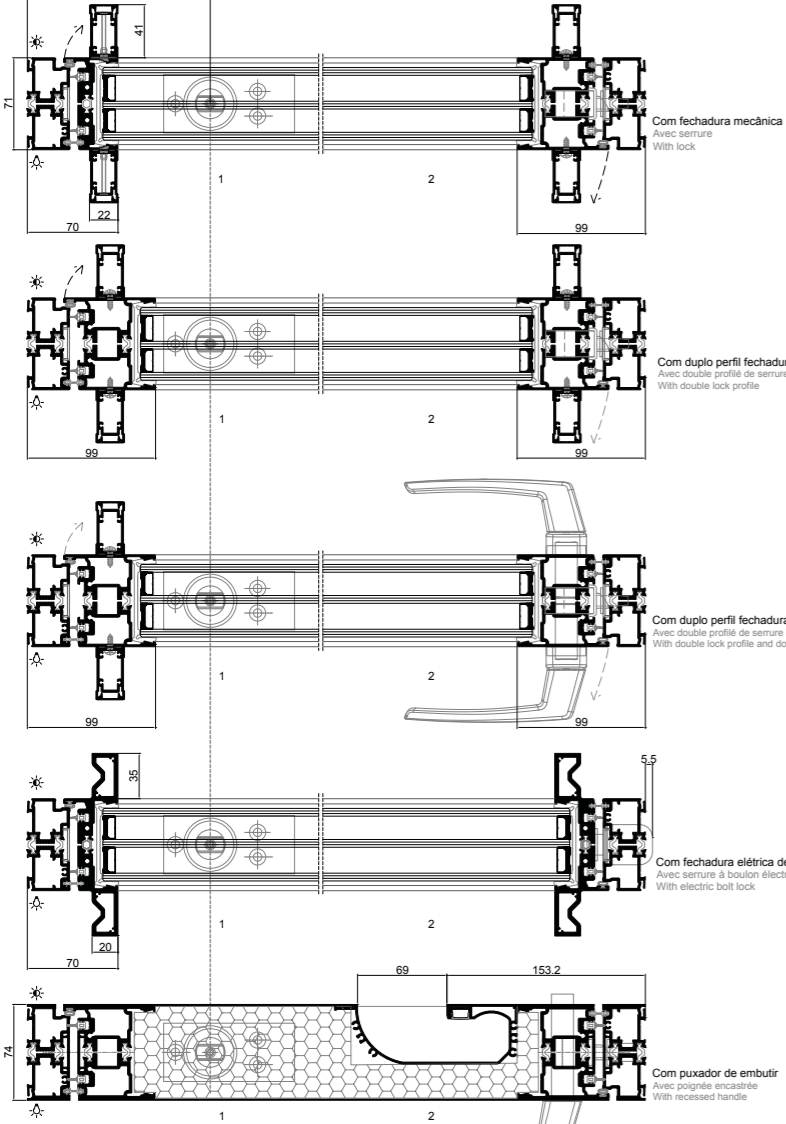


OS-P

tipologias
typologies
typologies



Mínimo | Minimal | Minimum 200mm (sem reforço | sans renforcement | without reinforcement)
Mínimo | Minimal | Minimum 350mm (com reforço | avec renforcement | with reinforcement)



Todas as tipologias integradas com o sistema OS-T são possíveis de executar em soleira oculta e soleira oculta com pavimento
Toutes les typologies intégrées avec le système OS-T peuvent être réalisées avec seuil caché et seuil caché avec revêtement sol continuus
All typologies integrated with the OS-T system can be executed with a concealed sill and concealed sill with continuous flooring

OS-G

sistema minimalista de guilhotina com corte térmico
système minimaliste de guillotine à rupture de pont thermique
minimal sash system with thermal break

A versão Guilhotina do sistema minimalista OS surge como forma de complementar as soluções já existentes, permitindo uma solução de abertura igualmente arrojada. Facilidade de manuseamento e leveza na abertura, fazem desta vertente minimalista uma solução diferente no que concerne a vãos de grandes dimensões, potenciando a visibilidade para o exterior.

La version Guillotine du système minimaliste OS émerge comme un moyen de compléter les solutions existantes, permettant une solution d'ouverture tout aussi audacieuse. Facilité de manipulation et de légèreté à l'ouverture, font de cette variante minimaliste une solution différente en termes de grands châssis, améliorant la visibilité vers l'extérieur.

The Guillotine version of the minimalist system OS emerges as a mean to complement the existing solutions, allowing an equally bold opening solution. Ease of handling and lightness at the opening, turn this minimalist version into a different solution when it comes to large frames, enhancing visibility to the outside.

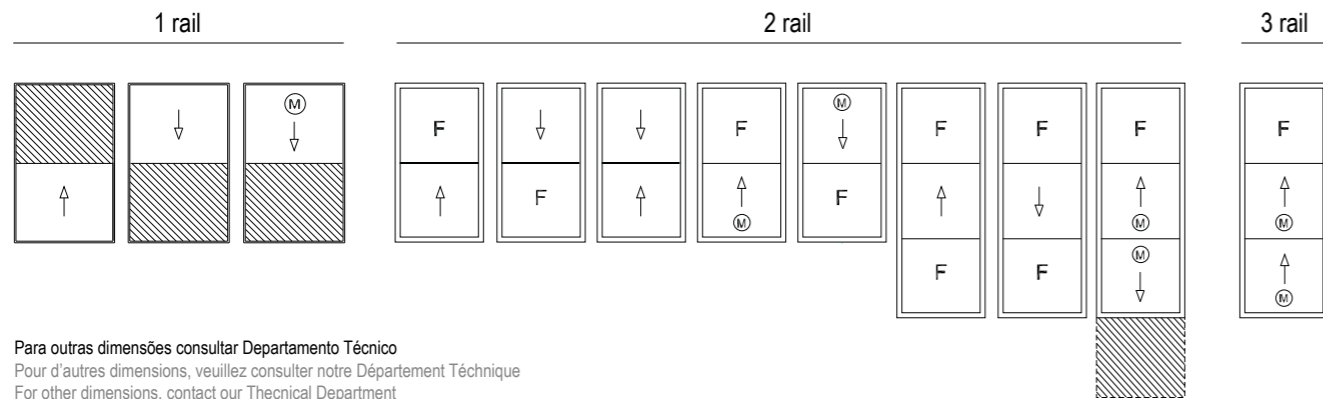


RESTAURANT | PORTUGAL

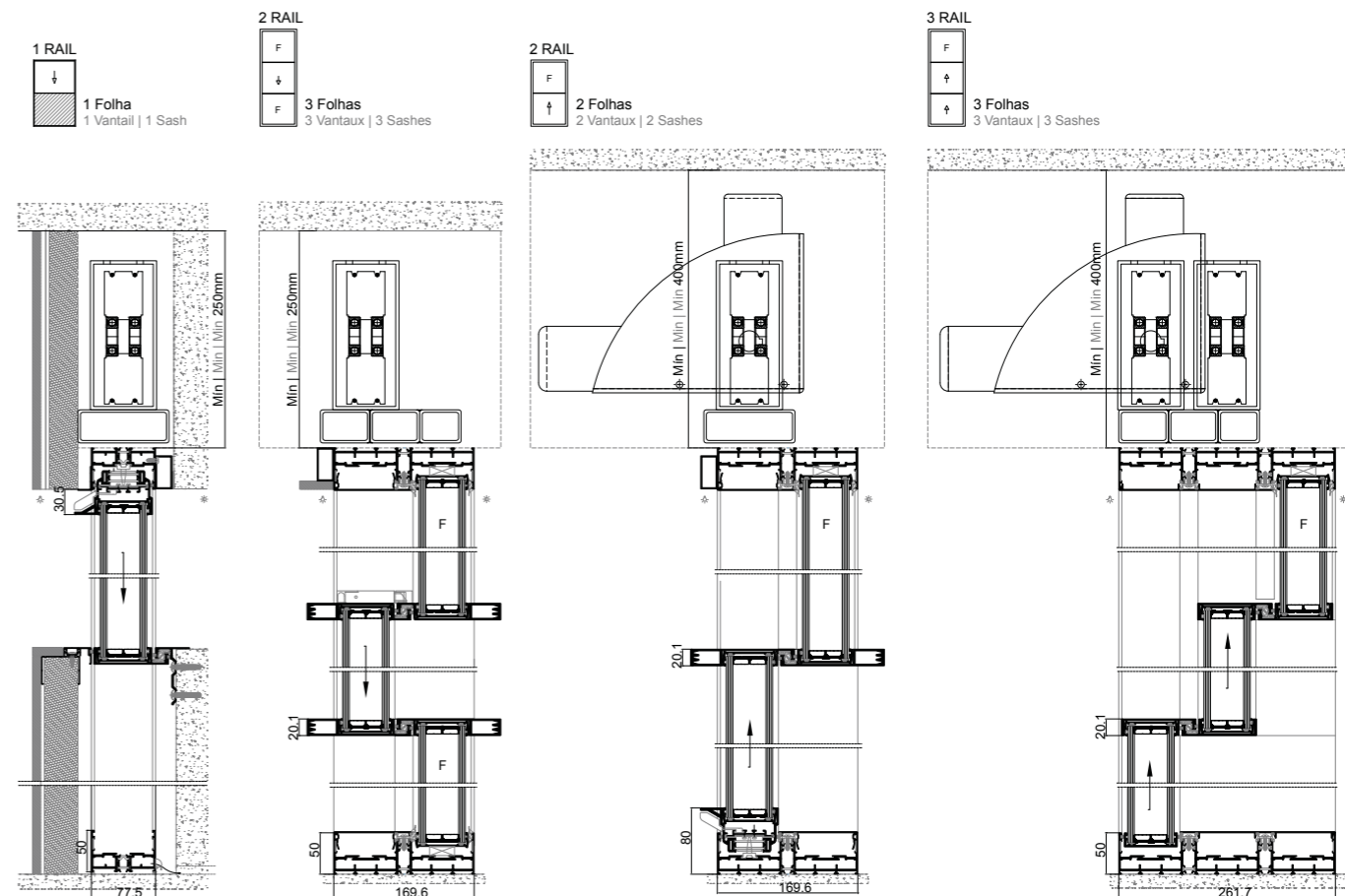
OS-Guilhotina

Peso máximo/folha: Consultar Departamento Técnico
Poids maximale/vantail: Consulter Département Technique
Maximum weight/sash: Consult Thecnical Department
Enchimento (vidros temperados): 56mm
Remplissage (verres trempés): 56mm
Filling (tempered glasses): 56mm
Abertura manual ou motorizada
Ouverture manuelle ou motorisée
Manual or motorised opening





Para outras dimensões consultar Departamento Técnico
 Pour d'autres dimensions, veuillez consulter notre Département Technique
 For other dimensions, contact our Technical Department



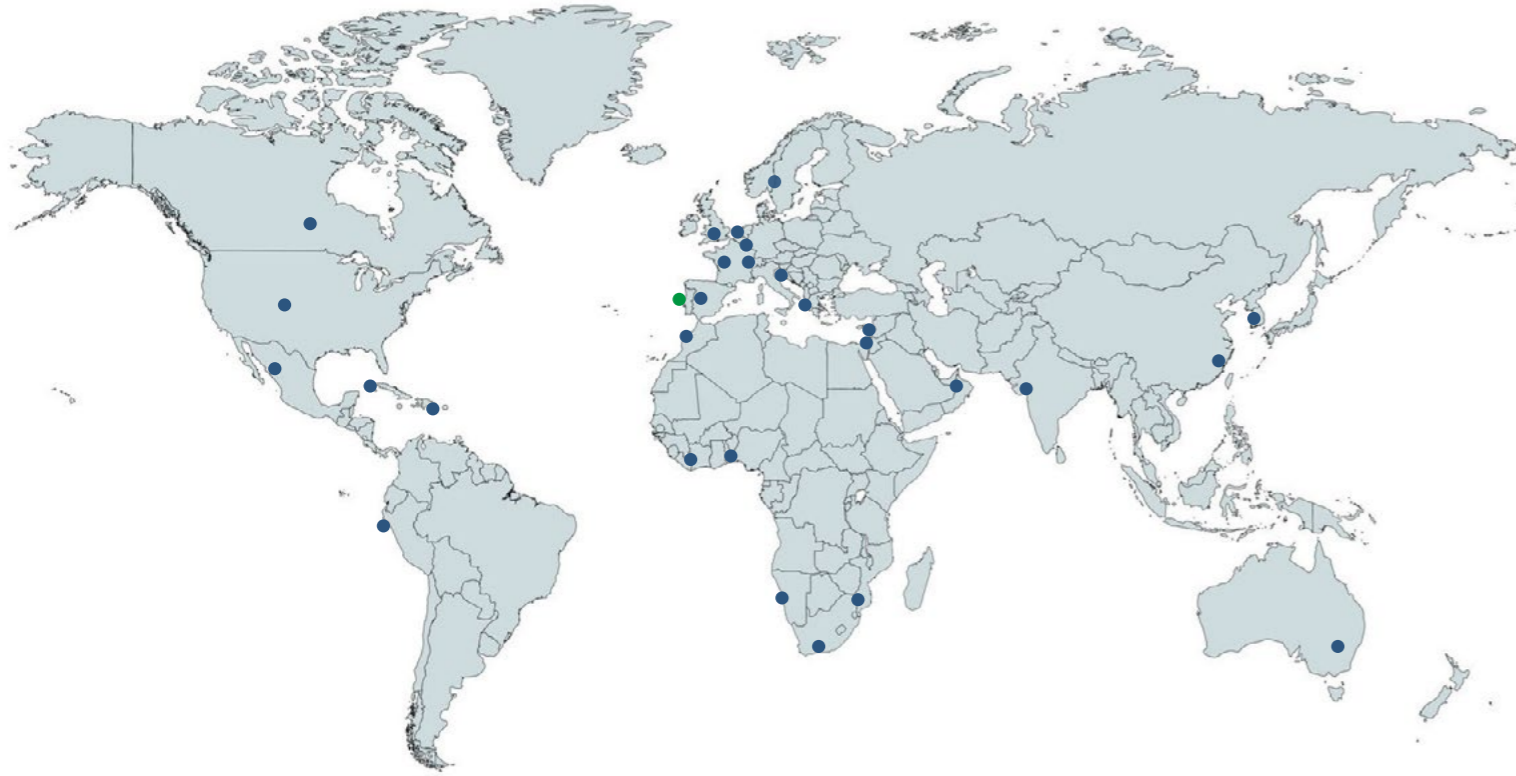
Abertura motorizada com contra-pesos
 Ouverture motorisée avec contreponds
 Motorised opening with counterweights

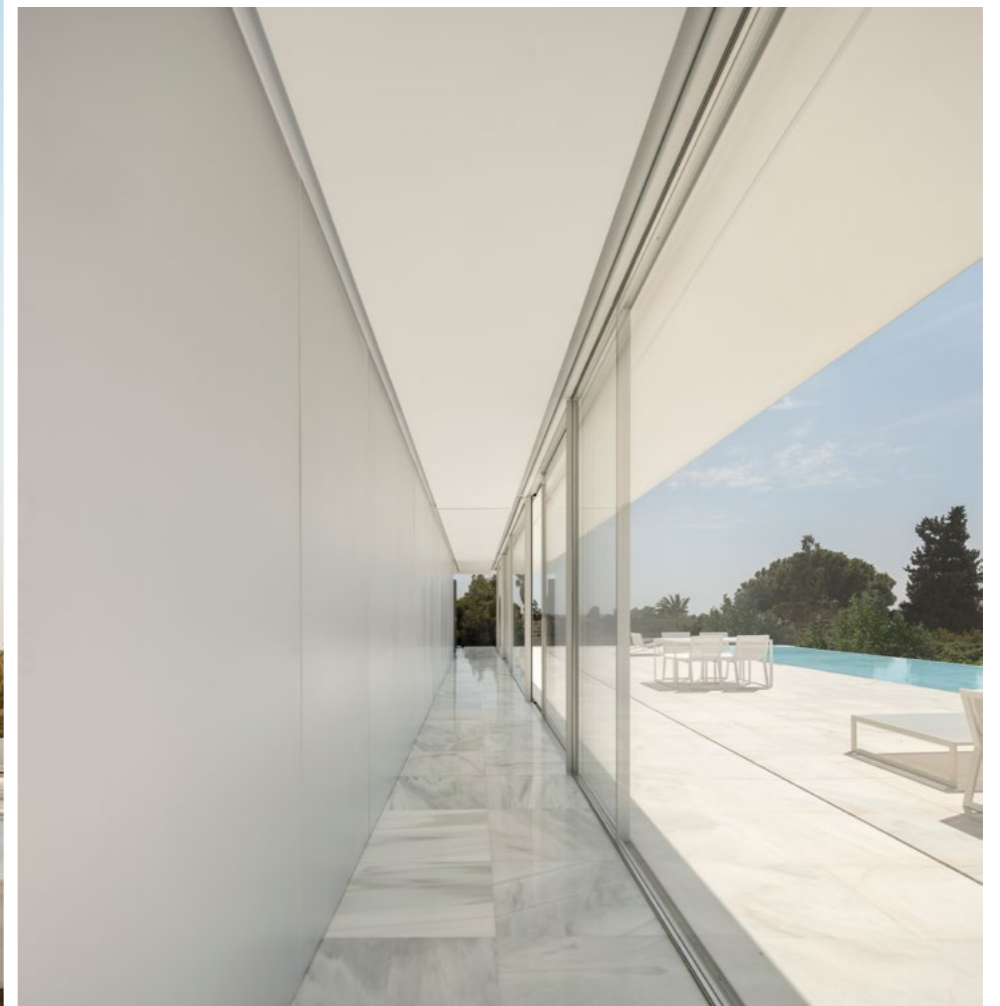


Abertura motorizada com tubular
 Ouverture motorisée avec tubulaire
 Motorised opening with tubular



Presença Sosoares
Présence Sosoares
Sosoares presence















LA BRISA HOUSE | SPAIN | FRAN SILVESTRE ARCHITECTS | DIEGO OPAZO PHOTOGRAPHY



HAIFA HOUSE | ISRAEL | PITSOU KEDEM ARCHITECT | AMIT GIRON PHOTOGRAPHY





Agradecimentos
Remerciements
Acknowledgements

“Enquanto Sistemistas, a nossa criação procura ir ao encontro das necessidades e visão dos nossos clientes e dos projetistas, pelo que agradecemos a todos os que contribuem para o seu desenvolvimento e melhoramento, confiando no nosso produto.”

“Comme Systématiciens, notre création cherche à répondre aux besoins et à la vision de nos clients et des concepteurs, nous remercions donc tous ceux qui contribuent à son développement et à son amélioration en faisant confiance à notre produit. “

“As Systemists, our creation aims to meet the needs and vision of our customers and designers, so we thank all those who contribute to its development and improvement by relying on our product.”



HOUSE in AVEIRO | PORTUGAL | NU.MA ARCHITECTURE | PHOTOGRAPHY BY IVO TAVARES STUDIO

GRUPO SOSOARES

PERFIS DE ALUMÍNIO E VIDROS PARA ARQUITECTURA



Refusão



Extrusão



Tratamento
Superfícies



Sistemas de
Caixilharia



Vidro



Painel
Compósito

Sosoares • Portalex • Alfa Sul • Alulider
www.sosoares.pt | comercial@sosoares.pt

ALFA SUL

📍 EN Lisboa-Sintra Km 14
2725-397 Mem Martins
☎ (+351) 219 265 090
☎ (+351) 219 265 098
✉ alfa.sul@sosoares.pt

ALULIDER

📍 Pav. Industrial H - Plataforma 13D
Zona Franca Industrial
9200-047 Caniçal - Madeira
☎ (+351) 291 960 494
☎ (+351) 291 960 497
✉ alulider@sosoares.pt

PORTALEX

📍 Estrada de S. Marcos, 23
2735-521 Cacém
☎ (+351) 210 412 500
☎ (+351) 210 412 507
✉ comercial@portalex.eu

SOSOARES

📍 Rua do Campo Alegre, 474
4150-170 Porto
☎ (+351) 226 096 709
☎ (+351) 226 005 642
✉ comercial@sosoares.pt